



# Joint Base Elmendorf-Richardson

*Home of America's Arctic Warriors*

Use this time to download the JBER Connect App.



**This is how the Installation communicates with you.**





# Joint Base Elmendorf-Richardson

## 673 ABW

### JBER's Installation Command

#### Our Mission:

- Project Forces
- Protect the Homeland
- Empower the Joint Base

#### Our Vision:

A united team of ALASKA-TOUGH warfighters – ready to deter and defeat adversaries in any theater, any climate, at home or abroad.

#### Our Focus:

- READY AIRMEN AND SOLDIERS
- READY BASE
- READY COMMUNITY



*Beware the Arctic Bear!*



# Strategic Significance

*Home of America's Arctic Warriors*

**“Alaska is the most central place in the world ... and that is true either of Europe, Asia or North America. I believe in the future, that he who holds Alaska will hold the world, and I think it is the most important strategic place in the world”**



-- Brigadier General Billy Mitchell – Feb 1935



*Agile Arctic Combat Support*





# Alaska's Strategic Location



Alaska is the most strategic place in the world – BG William "Billy" Mitchell, Testimony to Congress, 1935



Agile Arctic Combat Support





# Key JB ER Attributes

- Joint Operations
- World Class Drop Zones & Live Fire Ranges
- Four Airfields
- Deep Water Port
- Alaska Railway
- Key Logistics Hub
- Arctic Access

## Global Reach Capability

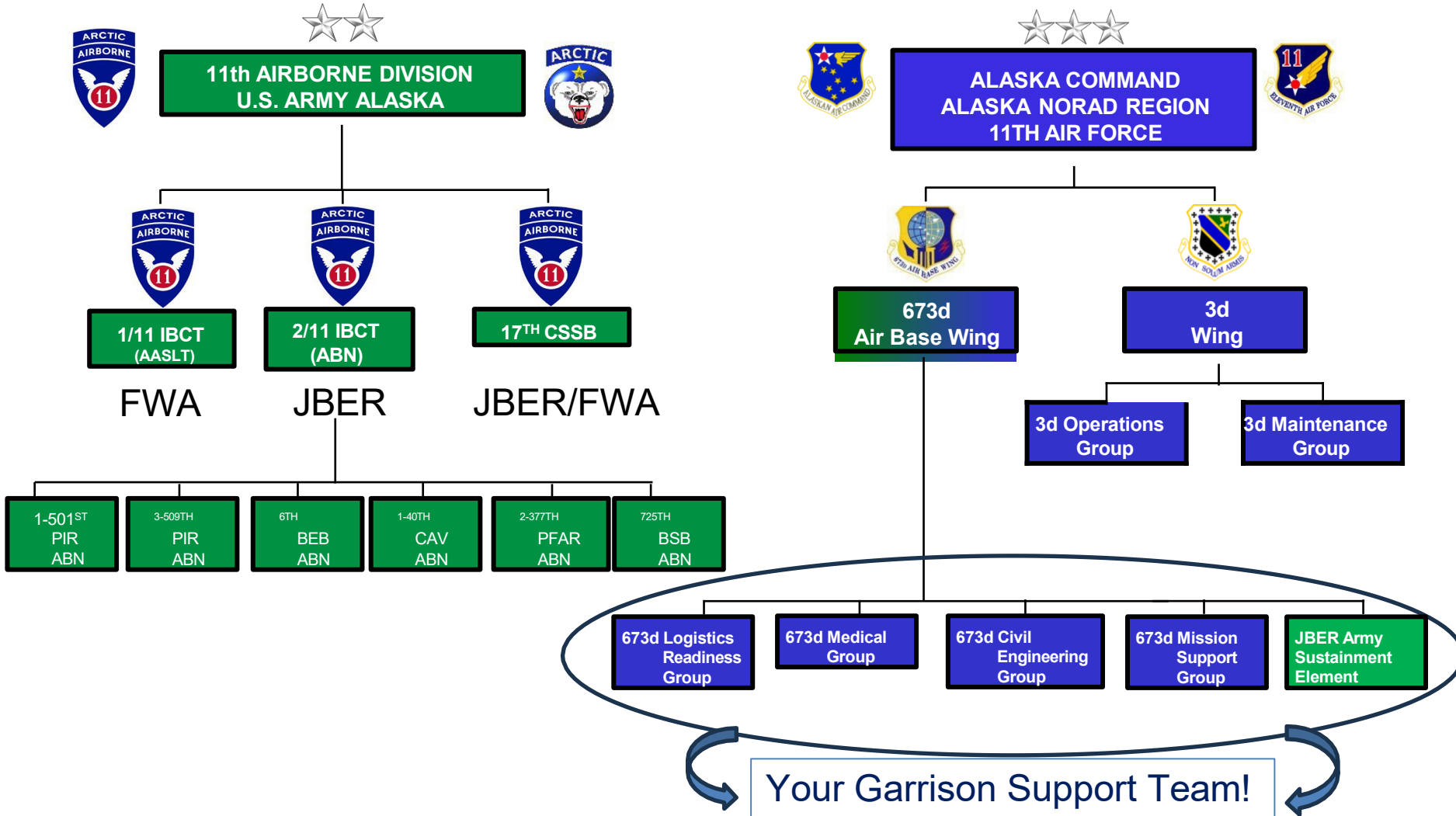


Agile Arctic Combat Support





# Joint Base Structure





**Col Lisa M. Mabbutt**  
Commander



**COL Stephen Polacek**  
Deputy Commander



**Col Troy Pierce**  
Deputy Commander



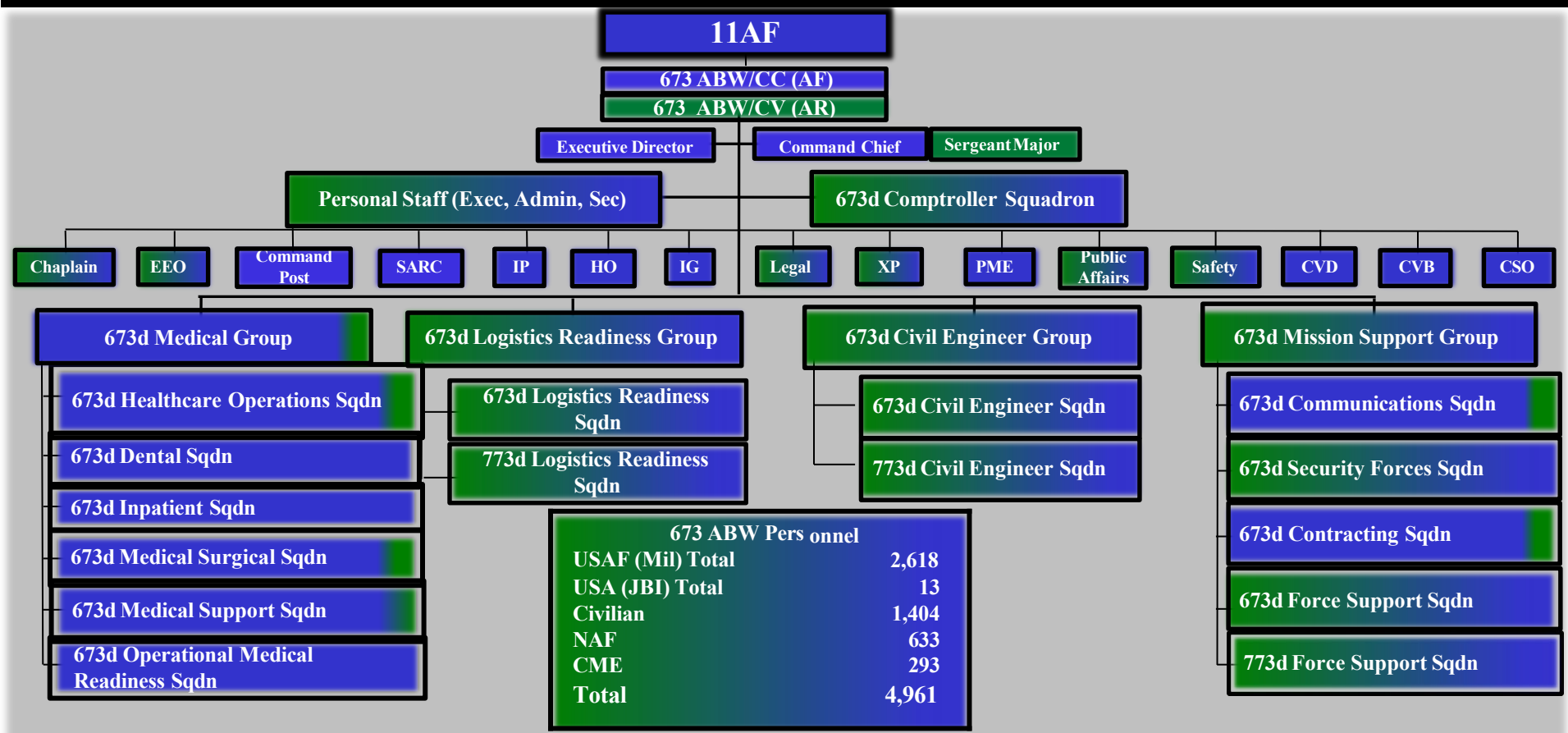
**CMSgt Michael Sylvester**  
Command Chief Master Sergeant



**SGM Joshua K. McComas**  
ABW Sergeant Major



**Mr. Don C. Weckhorst**  
Executive Director



673 ABW Pers onnel	
USAF (Mil) Total	2,618
USA (JBI) Total	13
Civilian	1,404
NAF	633
CME	293
<b>Total</b>	<b>4,961</b>



# Logistics Readiness Group

- Army Central Issue Facility
- Household Goods/POVs
- Deployment Operations (Joint Mobility Center)
- Combat Mobility Operations
- Air Force Materiel Management
- Refueling & PoL Safety
- Vehicle Management (TMP Yard)
- Ground Transportation (Busses and Box Trucks)



Material Management



Refueling Operations



Vehicle Management



Household Goods



Agile Arctic Combat Support





# Medical Group

- **Medical Care**
  - **Joint Venture with VA**
  - **Soldier Care Medical Home (Troop Medical Clinic) - Active Duty Army**
  - **JBER Hospital – DoD and Military Families**



*Agile Arctic Combat Support*





# Civil Engineer Group

## ■ Engineering

- Airfield/Road Repairs
  - Airfield Expansion
- Heat/Water/Electricity
- Firefighting/EOD/EM
- Housing/Barracks/Dorms



Agile Arctic Combat Support





# Mission Support Group

- **Mission Support**
  - Installation Security/Law Enforcement
  - IT/Cyber Operations
  - Contracting/Procurement
  - Military Personnel Programs
  - Dining Facilities
  - Fitness Centers
  - Lodging
  - Child and Youth Programs
  - Morale, Welfare, and Recreation Programs



Agile Arctic Combat Support





# Emphasis Items



## ■ Nefarious, Unethical, Immoral, Illegal Behavior

- Protect yourself: Use the Wingman / Ranger/ Battle Buddy system
- Off-Limit Areas: Temporary Ban for all Service Members on the Gaslight Lounge with a permanent ban being brought forward to the Armed Forces Disciplinary Meeting

## ■ Cost of Living Allowance (COLA)

- Don't Plan COLA or BAH into your long-term budget (you will move again)

## ■ Enjoy Alaska! ...know your experience level

- Be prepared for all weather and all conditions
- **Road Conditions:**

**Green:** Roads are clear and dry. Drivers will comply with normal vehicle operating procedures and posted speed limits. Motorcycles may operate on JBER.

**Amber:** It has been determined that roads may be slippery due to snow, ice, or reduced visibility. Drivers will exercise caution. Motorcycles may NOT operate on JBER.

**Red:** It has been determined that roads may be hazardous due to snow, ice, or reduced visibility. Drivers will exercise caution and reduce speeds by 10 miles per hour below the posted speed limit.

**Black:** It has been determined that road conditions are extremely hazardous due to ice, snow, or reduced visibility. Vehicle dispatching is prohibited unless directed by command authority. Only operate mission-essential and emergency response vehicles. Drivers will exercise extreme caution and reduce speeds by 10 miles per hour below the posted speed limit.



*Agile Arctic Combat Support*





# Base Security



## ■ JB ER Security Priorities

- Airfield
- F22 Hangars
- Early Warning Systems
- Arms Rooms and SCIFs
- Base Access Points

## ■ Types of Security Lockdowns

- **Stop, Check and Pass:** Slows the exit and entrance of traffic at all gates. Initiated when there is a description of a subject or there is a lost/missing child. BOLOs, assaults, and an active shooter scenario are also reasons for stop, check, and pass
- **Emergency Lock Down:** Complete stop of all entry and exits at all gates. Most commonly triggered by an Arms Room or SCIF vault alarm.

## ■ No Trusted Traveler Policy

- All visitors that are not DOD dependents must check in and receive a pass at the Visitors Center at either Boniface or Richardson Gates.

## ■ No Drones!

- All use of drones is banned on the installation



## BETTER OPPORTUNITY FOR SINGLE SERVICE MEMBERS

- Available to Single Service Members, Geo-Bachelors, and Single parents.
- Provides low to no cost events for JBER Service Members.
- Focuses on assisting Service Members building connections within their community, personal growth, and morale activities.
- **Rec & Leisure** – Fun events for low to no cost that boost morale for Service Members.
- **Community Service** - Service Members get involved into the local community and earn volunteer hours.
- **Life Skills** - Classes that teach, certify or license the Service Member.
- **Quality of Life** – Events held to boost morale and assist with Installation issues.
- Sign up for events through **JBER BOSS Linktree** online or scan code on our flyers and calendar.

### Contact Information

- BOSS Phone - (907)406-4405
- SPC Jackson, Destinee (President)  
[destinee.t.jackson.mil@army.mil](mailto:destinee.t.jackson.mil@army.mil)
- SGT Johnson, David (VP)  
[david.a.johnson1329.mil@army.mil](mailto:david.a.johnson1329.mil@army.mil)
- JBER BOSS Linktree





# Joint Base Against Drunk Driving (JBADD)



## ■ Joint Base Against Drunk Driving (JBADD):

- Volunteer Organization that offers **FREE rides home to Service Members, Veterans, DOW Civilians and dependents.** All that is needed is that a member of the party requesting a ride has a DODID Card.
- Call **907-384-7433** for a free ride home!
- JBADD can also schedule pickups for unit social events. (Two Week minimum notice is required).



Agile Arctic Combat Support



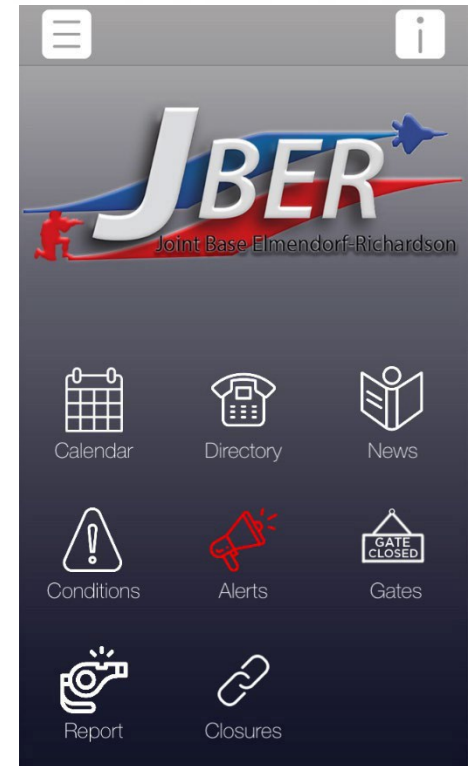


# How We Communicate

- **JB ER Connect App**
- **JB ER Website Link**
  - <http://www.jber.jb.mil>
- **JB ER Facebook Link**
  - <https://www.facebook.com/JBERAK>
- **Emergency Mass Notification system (AtHoc)**
  - See your unit POC to sign up
- **Interactive Customer Evaluation (ICE)**
  - [http://ice.disa.mil/index.cfm?fa=site&site\\_id=982](http://ice.disa.mil/index.cfm?fa=site&site_id=982)



# JB ER Connect



Agile Arctic Combat Support





# Questions

